

Jaarbericht 2005

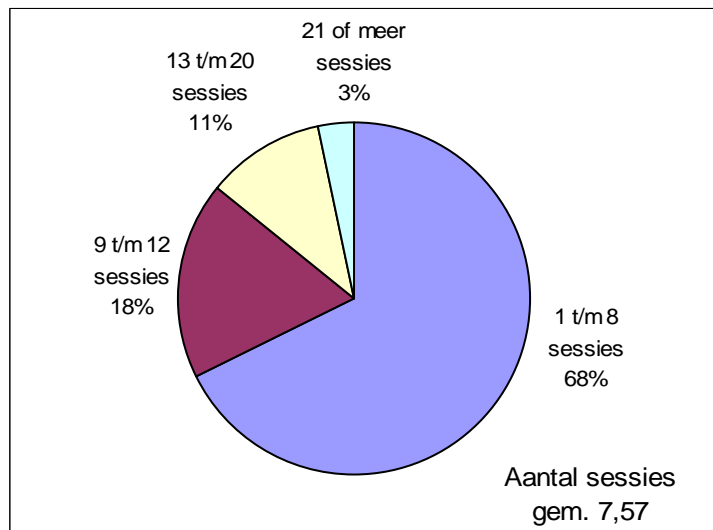
Grafieken en tabellen – correctie grafieken 12 en 21

Gebaseerd op de gegevens van ca. 52.000 cliënten van 726 psychologen

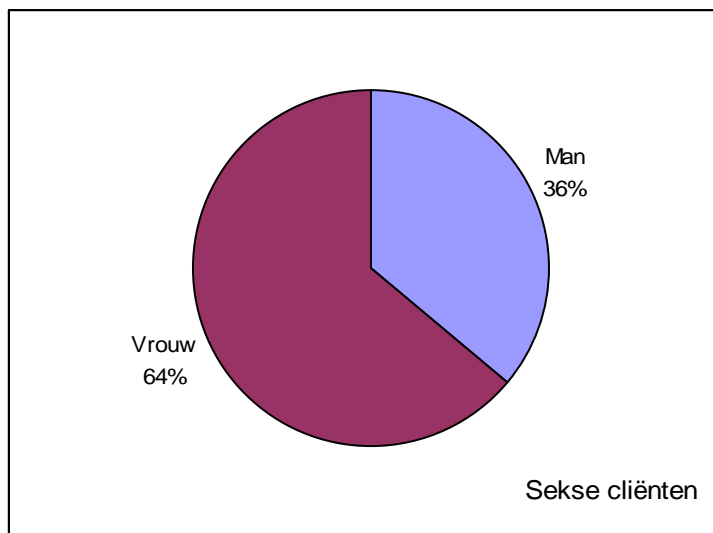
Inschatting totaal aantal cliënten van alle psychologen = ca. 71.500

Gemiddelde behandelingsduur 20,2 weken.

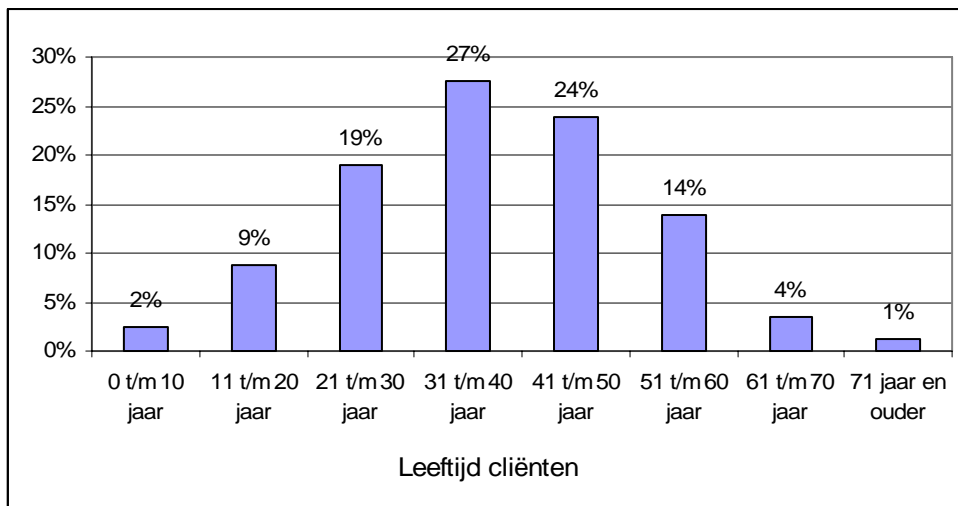
Grafiek 1



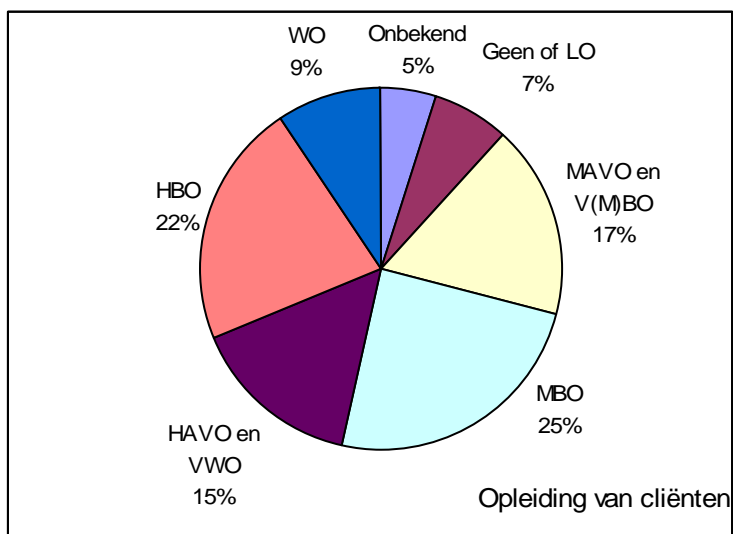
Grafiek 2



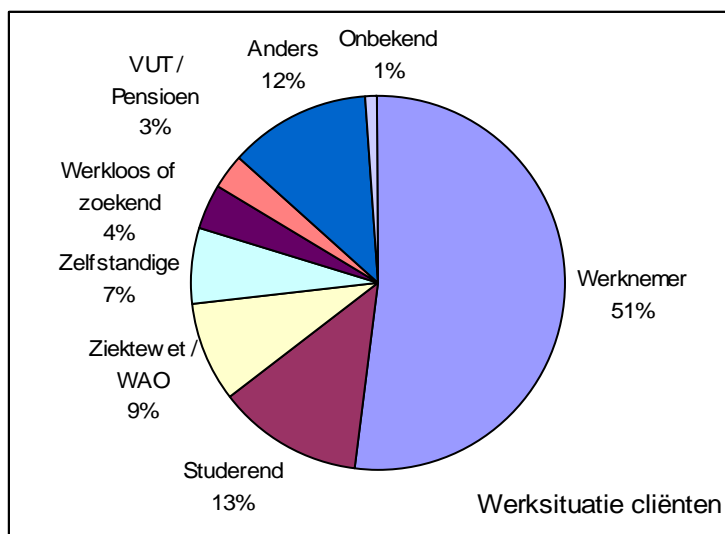
Grafiek 4



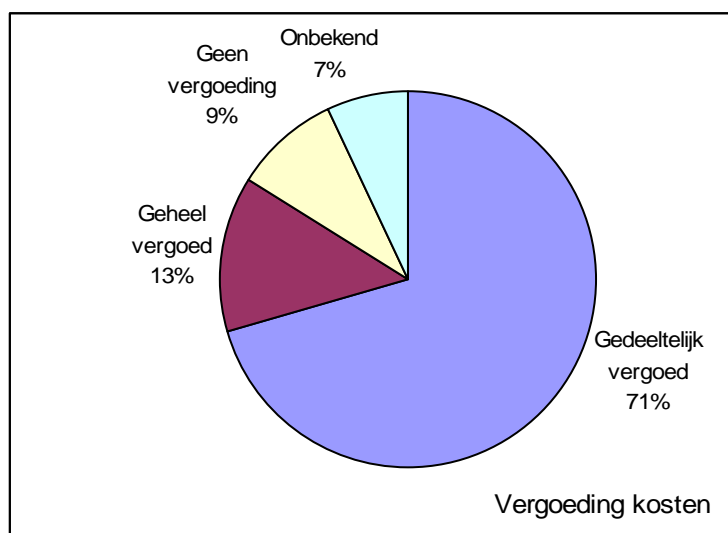
Grafiek 5



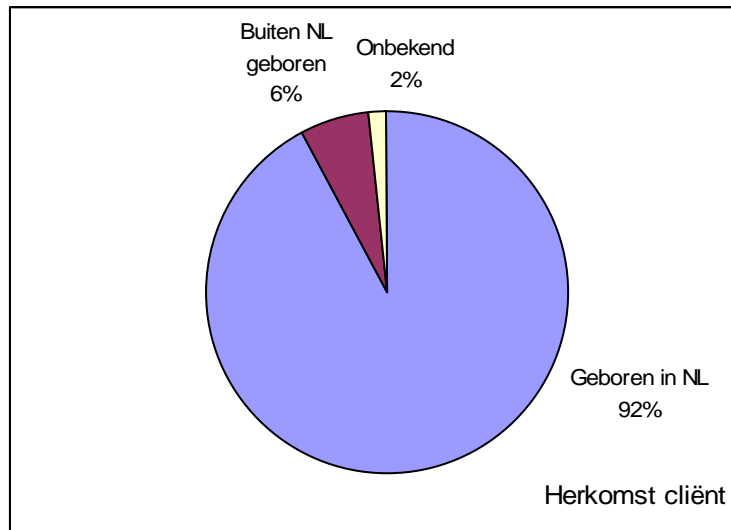
Grafiek 6



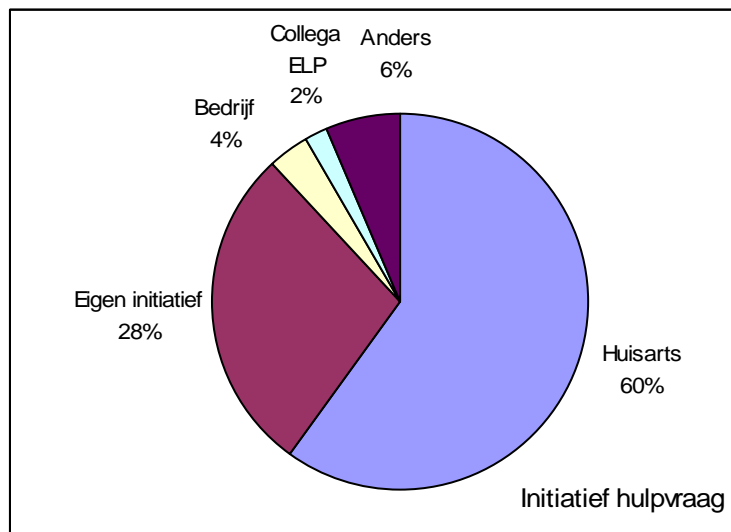
Grafiek 7



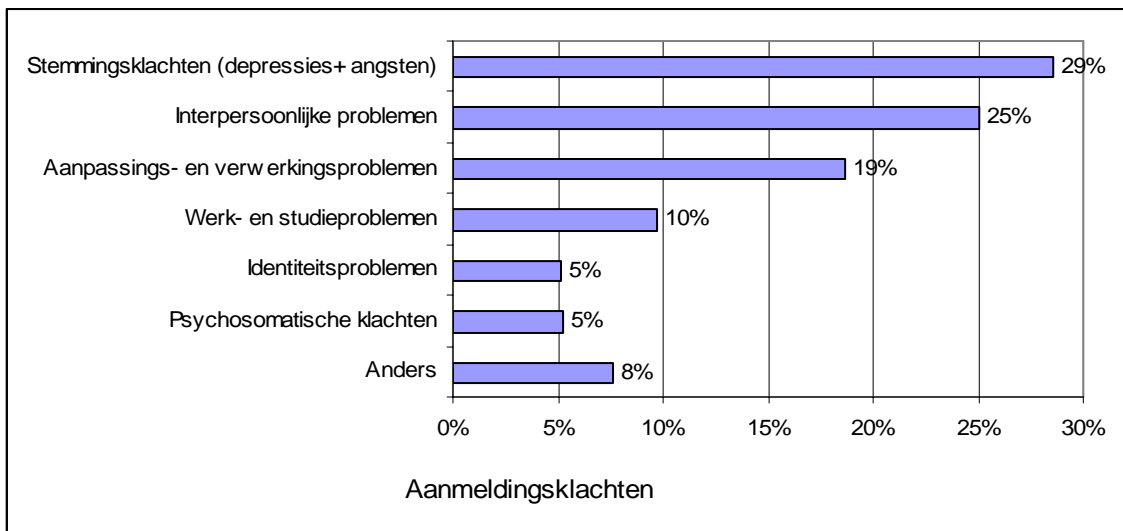
Grafiek 8



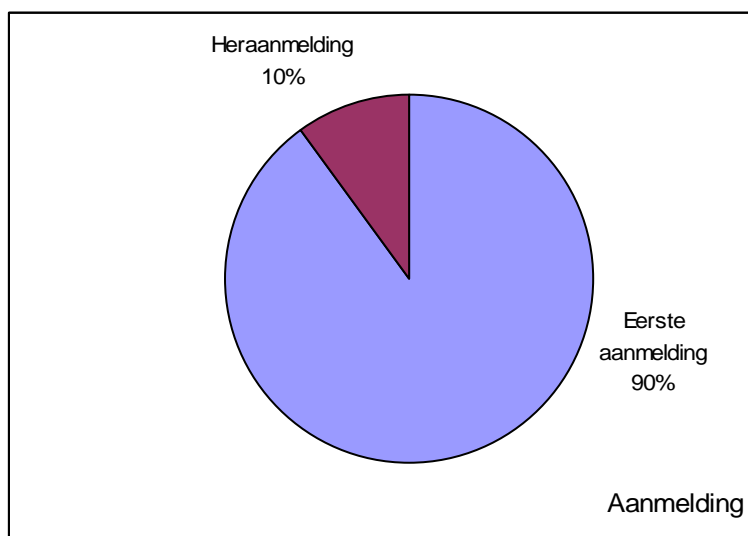
Grafiek 9



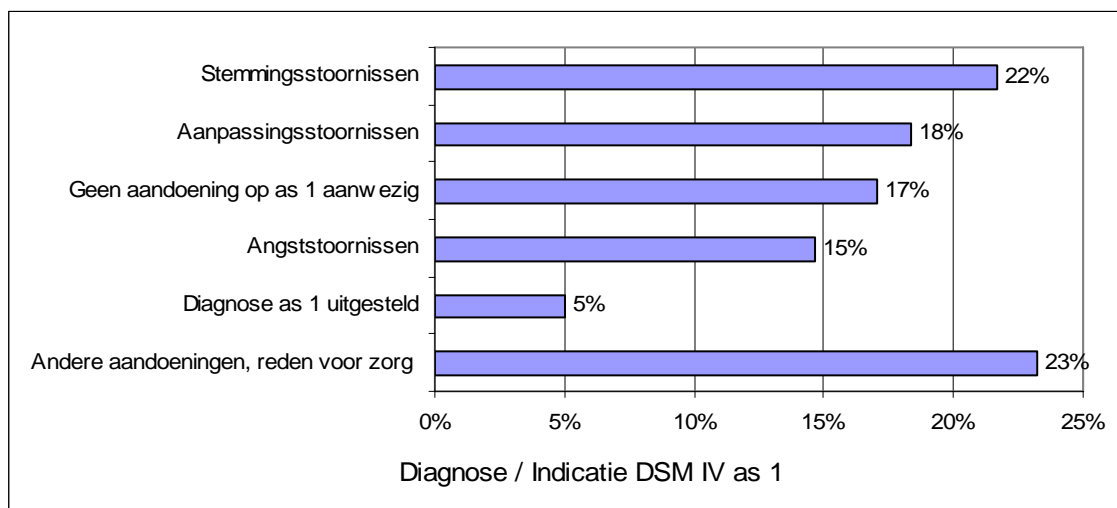
Grafiek 10



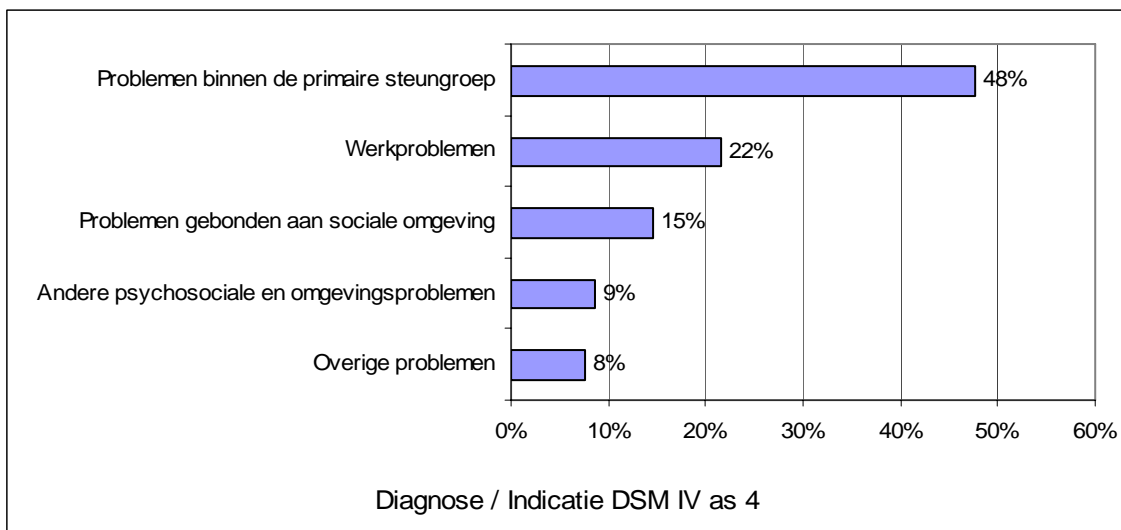
Grafiek 11



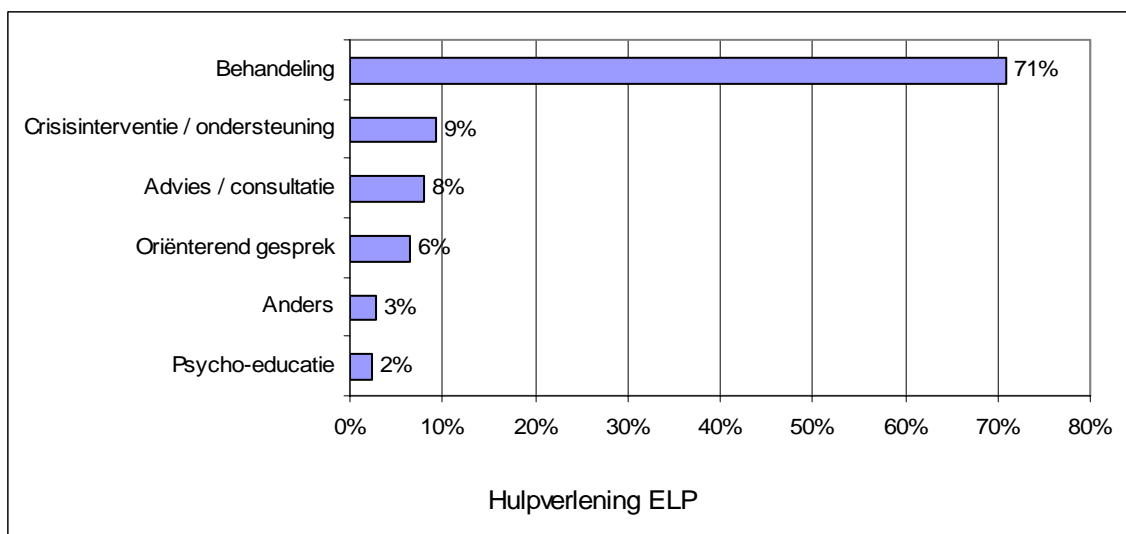
Grafiek 12



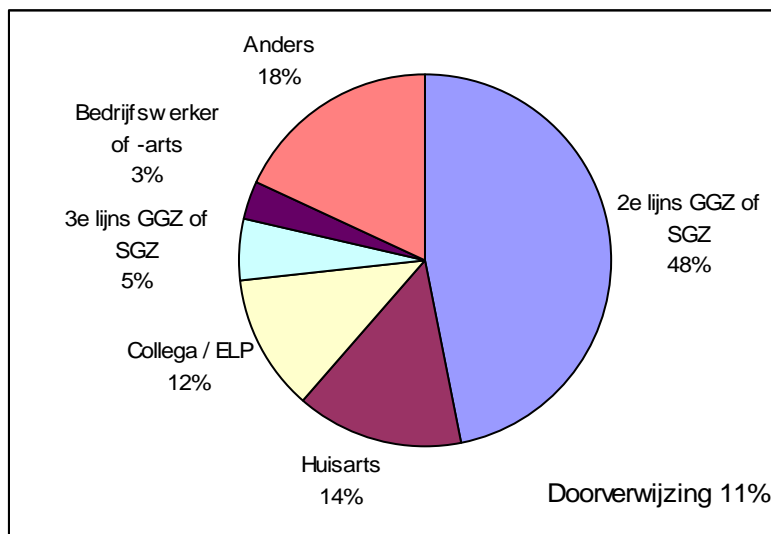
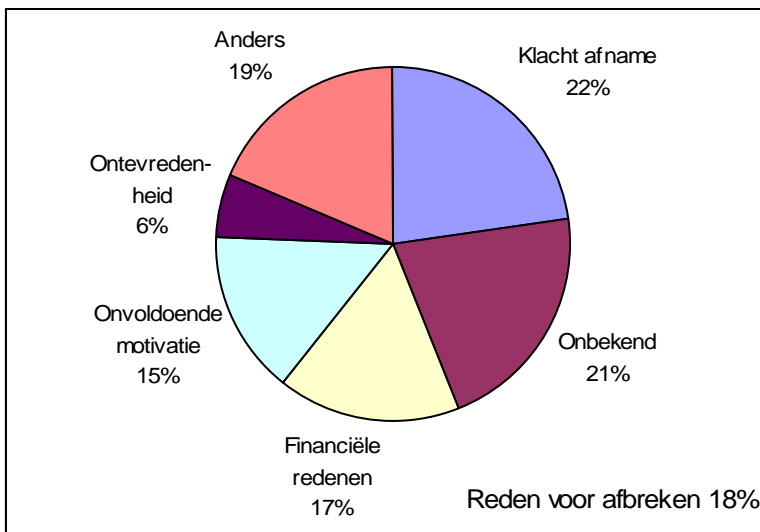
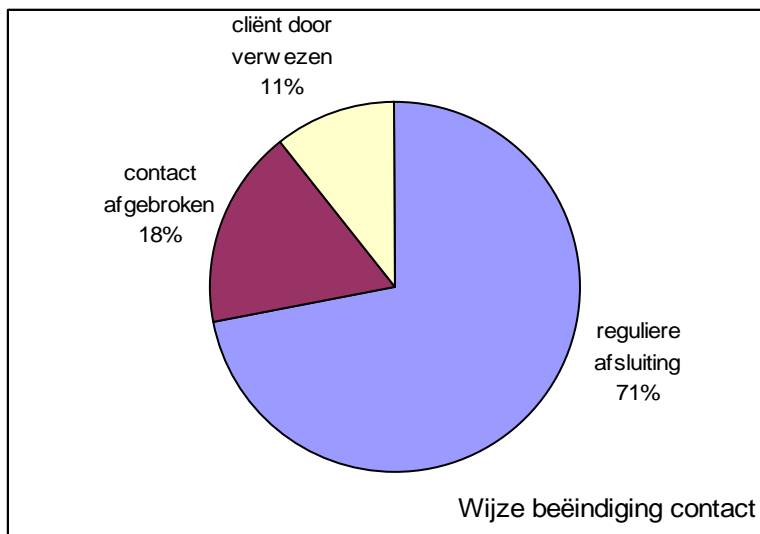
Grafiek 15



Grafiek 17



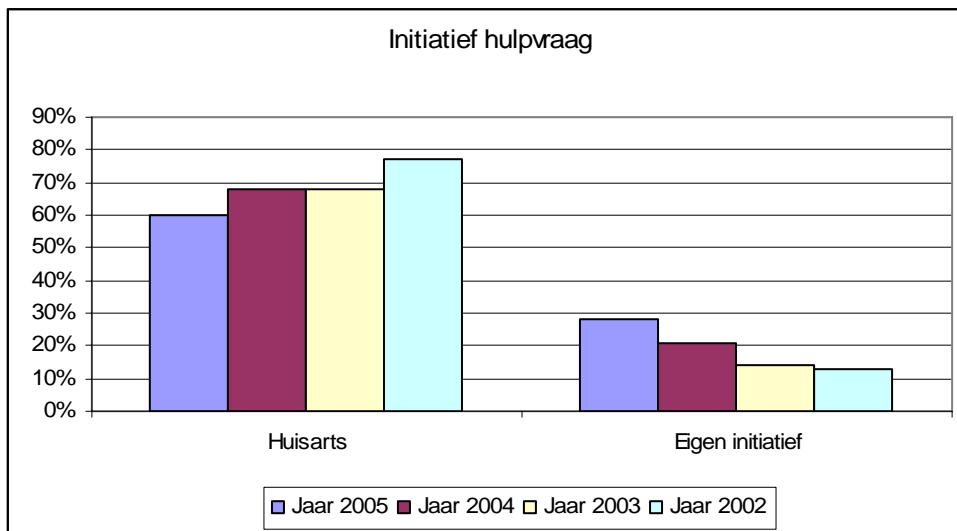
Grafieken 18, 19 en 20 (in kader te plaatsen)



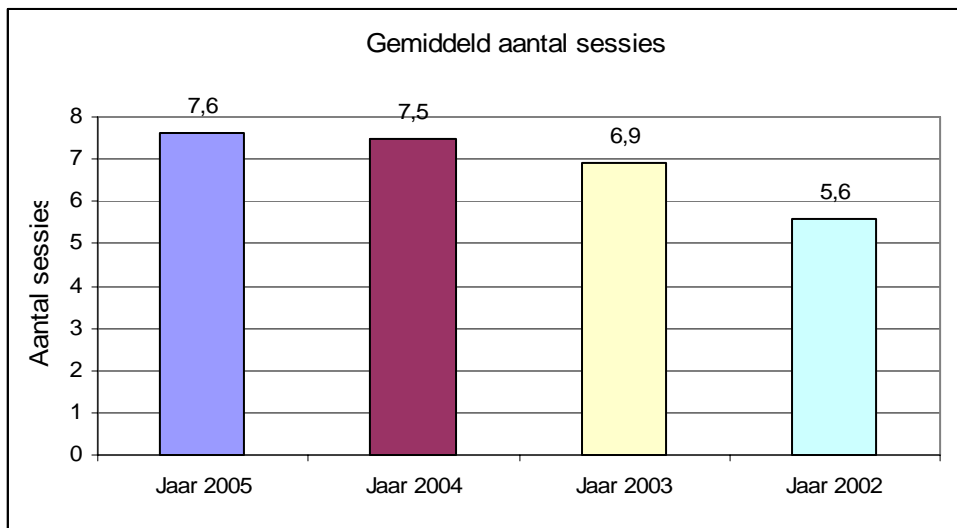
Grafiek 21

Aantal	536	2853	9048	18279	16184	3218
GAF bij aanmelden	100-91	90-81	80-71	70-61	60-51	50 en lager
GAF bij afsluiting						
100 - 91	94%	39%	16%	6%	4%	3%
90 - 81	3%	59%	46%	33%	22%	15%
80 - 71	1%	1%	37%	36%	29%	20%
70 - 61	1%	0%	1%	24%	25%	21%
60 - 51	0%	0%	0%	0%	19%	19%
50 en lager	0%	0%	0%	0%	0%	21%

Grafiek 22



Grafiek 24

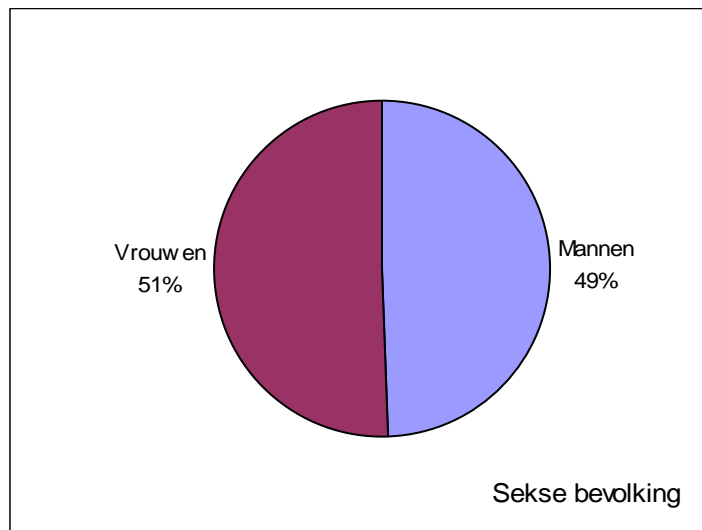


Grafiek 25

Provincie	Aantal inwoners 2005	Aantal ELP (Lid LVE)	Inwoners per fte ELP
Groningen	575.072	36	22.820
Friesland	642.977	40	22.963
Drenthe	483.369	24	28.772
Overijssel	1.109.432	53	29.904
Flevoland	365.859	26	20.102
Gelderland	1.972.010	111	25.380
Utrecht	1.171.291	114	14.678
Noord-Holland	2.599.103	208	17.851
Zuid-Holland	3.458.381	147	33.609
Zeeland	379.978	13	41.756
Noord-Brabant	2.411.359	158	21.803
Limburg	1.136.695	48	33.830

Referentiegrafieken CBS

Grafiek 26



Grafiek 27

